

CK70/ CK71 Series Options

What options do you get on the CK70 (UMTS & WLAN) and CK71 (WLAN Only)?

1. Keyboard



CK70 Alphanumeric CK70 Large Alpha CK71 Alphanumeric CK71 Numeric F-Key

No Camera	CK70A <u>A1</u> KNU3W2100	CK70A <u>B1</u> KNU3W2100	CK71A <u>A2</u> x <u>N</u> xxxxxxx	CK71A <u>B2</u> x <u>N</u> xxxxxxx
5MP Camera	CK70A <u>A1</u> KCU3W2100	CK70A <u>B1</u> KCU3W2100	CK71A <u>A2</u> x <u>C</u> xxxxxxx	CK71A <u>B2</u> x <u>C</u> xxxxxxx

All CK70/ CK71 units include a 5200mAH battery

2. Scan Engine – CK70 uses EA30 Only, CK71 has the below options:

EA30	EX25	EV12
CK7xAxx <u>K</u> xxxxxxx	CK71Axx <u>M</u> xxxxxxx	CK71Axx <u>D</u> xxxxxxx
Engine Type Area Imager	Engine Type Near/ Far Area Imager	Engine Type Linear Imager
Aiming Pattern 	Aiming Pattern 	Aiming Pattern
Typical Scanning Distance* Min: 6cm Max: 34cm	Typical Scanning Distance* Min: 20.2cm Max: 109.7cm	Typical Scanning Distance* Min: 5.1cm Max: 27.9cm
Strengths: <ul style="list-style-type: none"> • Omni-directional 1D and 2D scanning. • Combines the flexibility of 2D and standard range scanning. • Superior motion tolerance 	Strengths: <ul style="list-style-type: none"> • 1D and 2D scanning from 6 inches to 50 feet. • Ideal for the warehouse, loading dock or in the yard. • Black & White Image Capture. 	Strengths: <ul style="list-style-type: none"> • Aggressive 1D only scanning – up to 500 scans per second. • Read contaminated, damaged or wrapped bar codes quickly/easily.

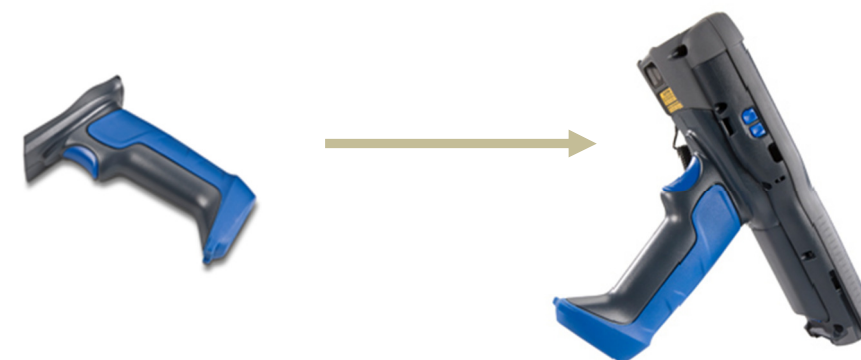
*Scanning EAN/UPC 1D barcode of 0.33mm (13 mils) density.

3. Camera



5MP Auto focus Colour Camera with LED Flash

4. Pistol Grip



Part# 805-836-001 - Scan Handle, Model CK70/CK71, RoHS

CK70/ CK71 Vehicle Install

Option 1 - Fixed Vehicle Install with DC/DC Converter

Best used when the vehicle input voltage varies, 12, 24, 36, 48V.



Part Number	Description
1 871-035-001	Vehicle Dock, CK70/CK71, RoHS (Provides USB (HDB15M) and RS232 (DB9M) receptacles).
2 203-808-001	DC/DC Converter Kit, 6-60V DC, RoHS
OR 203-809-001	DC/DC Converter Kit, 15-96V DC RoHS
3 805-638-001	Mounting Kit, CK60/CN2/CN3 V-Dock RoHS

CK70/ CK71 Vehicle Install

Option 2 - Fixed Vehicle Install with direct connection to vehicle battery.

Only use when the vehicle input voltage is between **10-32V**.



Part Number	Description
1 871-035-001	Vehicle Dock, CK70/CK71, RoHS (Provides USB (HDB15M) and RS232 (DB9M) receptacles).
2 203-802-001	Vehicle Dock Installation Kit RoHS (Includes power cables and cable mounting hardware.)
3 805-638-001	Mounting Kit, CK60/CN2/CN3 V-Dock RoHS

CK70/ CK71 Vehicle Install

Option 3 - Portable Vehicle Install powered by the vehicle power adapter 12 or 24V.

Portable between vehicles, and mounts to the vehicle windscreen.



Part Number	Description
1 871-035-001	Vehicle Dock, CK70/CK71, RoHS (Provides USB (HDB15M) and RS232 (DB9M) receptacles).
2 852-057-005	Auto Adapter, V-Docks, 3S Circular, RoHS
3 RAMMOUNT	Suction Cup RAM Mount - (Not an Intermec Part, available from Intermec Distributors)

70 Series Vehicle Charging Only, No Mounting.

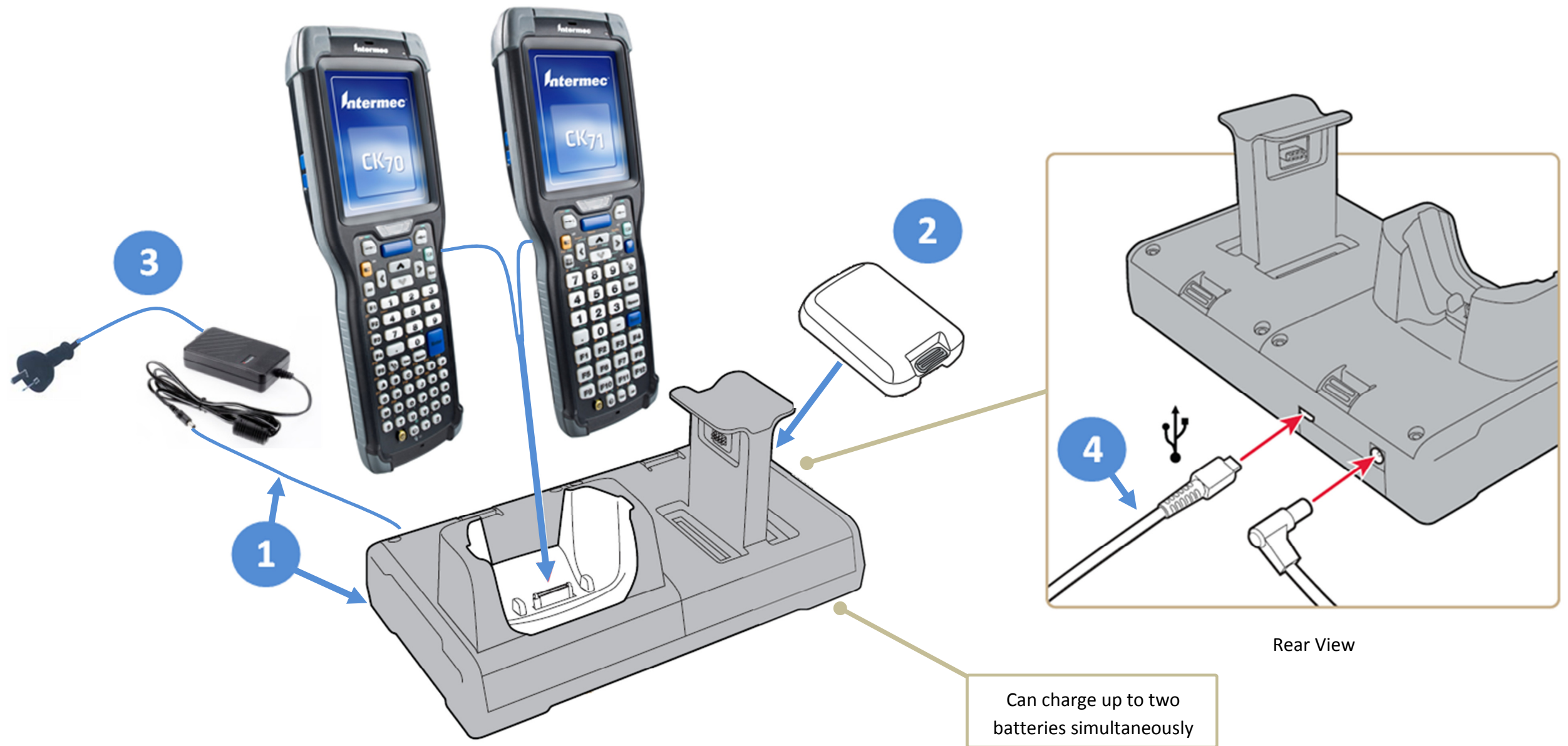
Provides charge directly to the 70 Series



Part Number	Description
1 852-071-002	Vehicle Power Adapter, Hirose 3840-IMA-18P

CK70/ CK71 Charging and Communications

Single Dock ActiveSync with 2 x Spare Battery Charging



Part Number	Description
1	DX1A02B00 Desktop Dock, CK70/71, no Power Cord (Power Supply Included)
2	318-046-001 BATTERY, CK70/CK71 (Spare or replacement battery pack for CK70/71 (one pack included with each mobile computer))
3	1-974030-025 AC Power Cord, Australia RoHS
4	236-209-001 Cable Assy, USB-A to USB-microB, 1M

70 Series Charging and Communications

Option 2 - Snap-on Charging and ActiveSync



	Part Number	Description
	1	850-567-001 Snap-on Adapter, USB
	2	VE011-2018 Cable, Developers CN3/CN4/CV30 series
	3	851-094-001 AC Power Supply, 4.37V, 2A, 18 Pos, RoHS
	4	1-974030-025 AC Power Cord, Australia RoHS
Optional	203-933-001	Stand, Desktop, CN70/CN70e
OR	203-934-001	Stand, Desktop, CK70/CK71

70 Series Charging and Communications

Snap-on Charging and Serial Comms



Optional Stand



	Part Number	Description
	1	850-566-001 Snap-on Adapter, RS232
	2	851-094-001 AC Power Supply, 4.37V, 2A, 18 Pos, RoHS
	3	1-974030-025 AC Power Cord, Australia RoHS
Optional		203-933-001 Stand, Desktop, CN70/CN70e
	OR	203-934-001 Stand, Desktop, CK70/CK71

70 Series Charging and Communications

Snap-on Charging and Ethernet Comms



	Part Number	Description
	1	850-565-001 Snap-on Adapter, Ethernet
	2	851-094-001 AC Power Supply, 4.37V, 2A, 18 Pos, RoHS
	3	1-974030-025 AC Power Cord, Australia RoHS
Optional		203-933-001 Stand, Desktop, CN70/CN70e
	OR	203-934-001 Stand, Desktop, CK70/CK71

70 Series Charging and Communications

Snap-on Charging and DEX Comms



Optional Stand



	Part Number	Description
	1 850-568-001	Snap-on Adapter, DEX
	2 851-094-001	AC Power Supply, 4.37V, 2A, 18 Pos, RoHS
	3 1-974030-025	AC Power Cord, Australia RoHS
Optional	203-933-001	Stand, Desktop, CN70/CN70e
OR	203-934-001	Stand, Desktop, CK70/CK71

70 Series Charging and Audio Headset Connector

Snap-on Charging and Headset Jack



Optional Stand



	Part Number	Description
	1	850-577-001 Snap-On Adapter, Audio, Standard RoHS
	2	851-094-001 AC Power Supply, 4.37V, 2A, 18 Pos, RoHS
	3	1-974030-025 AC Power Cord, Australia RoHS
Optional		203-933-001 Stand, Desktop, CN70/CN70e
OR		203-934-001 Stand, Desktop, CK70/CK71

70 Series Charging and Vocollect Headset Connector

Snap-on Charging and Vocollect Headset Jack



	Part Number	Description
	1	850-569-001 Snap-on Adapter, VOCOLLECT
	2	851-094-001 AC Power Supply, 4.37V, 2A, 18 Pos, RoHS
	3	1-974030-025 AC Power Cord, Australia RoHS
Optional		203-933-001 Stand, Desktop, CN70/CN70e
	OR	203-934-001 Stand, Desktop, CK70/CK71

CK70/ CK71 Mag Stripe Reader

Mag Stripe Reader

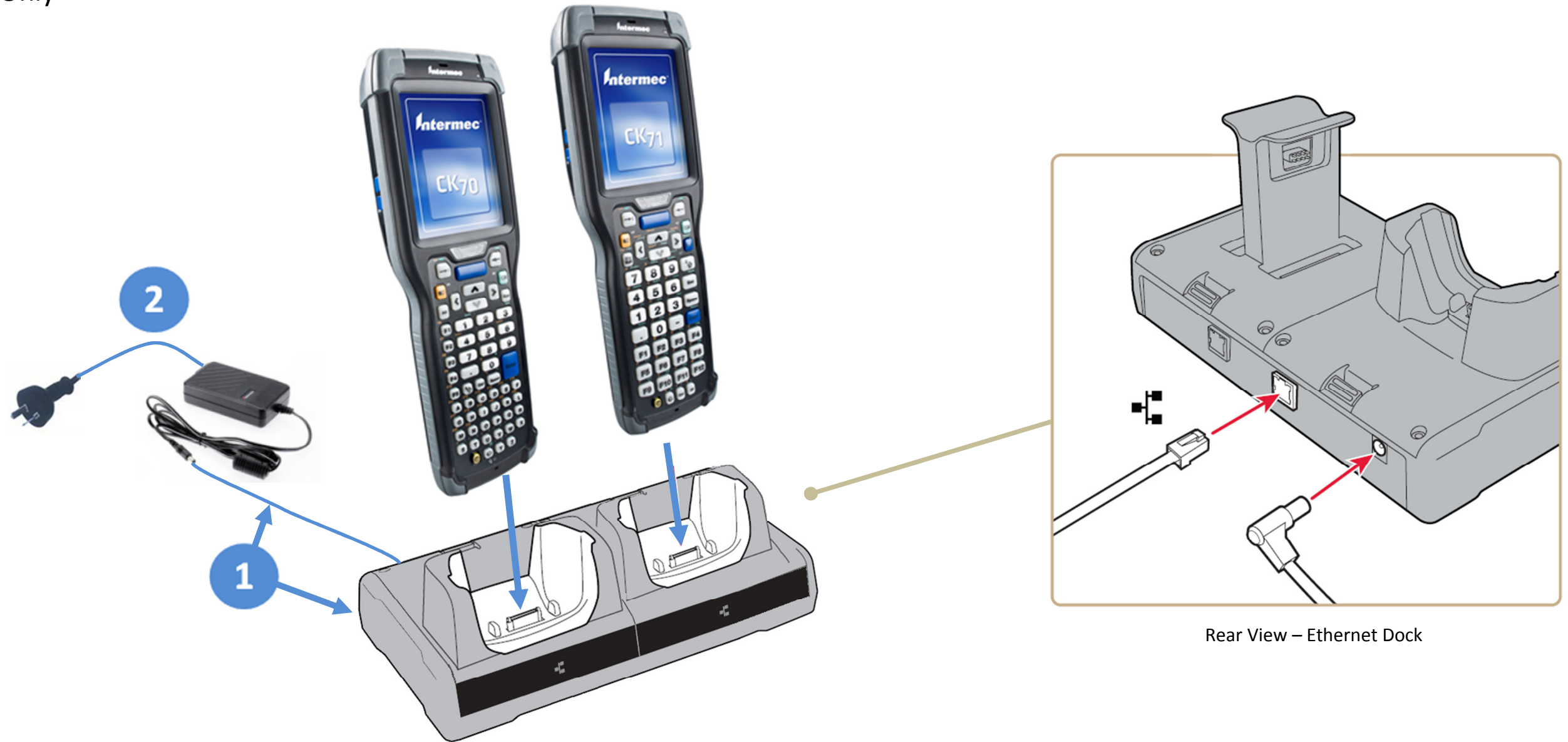


	Part Number	Description
1	850-574-001	Magnetic Stripe Reader, CK70/CK71 (Attaches to Back Accessory Interface (included) on CK70/71.)
2	852-071-002	Vehicle Power Adapter, Hirose 3840-IMA-18P

CK70/ CK71 Charging and Communications

Dual Dock Ethernet

Dual Dock Charge Only



Rear View – Ethernet Dock

Part Number	Description
1	DX2A12200 Dual Dock, Ethernet , CK70/71, no Power Cord (Power Supply Included)
OR	DX2A22200 Dual Dock, Charge Only , CK70/71, no Power Cord (Power Supply Included)
2	1-974030-025 AC Power Cord, Australia RoHS

CK70/ CK71 Charging and Communications

Quad Dock with Ethernet

Quad Dock Charge Only

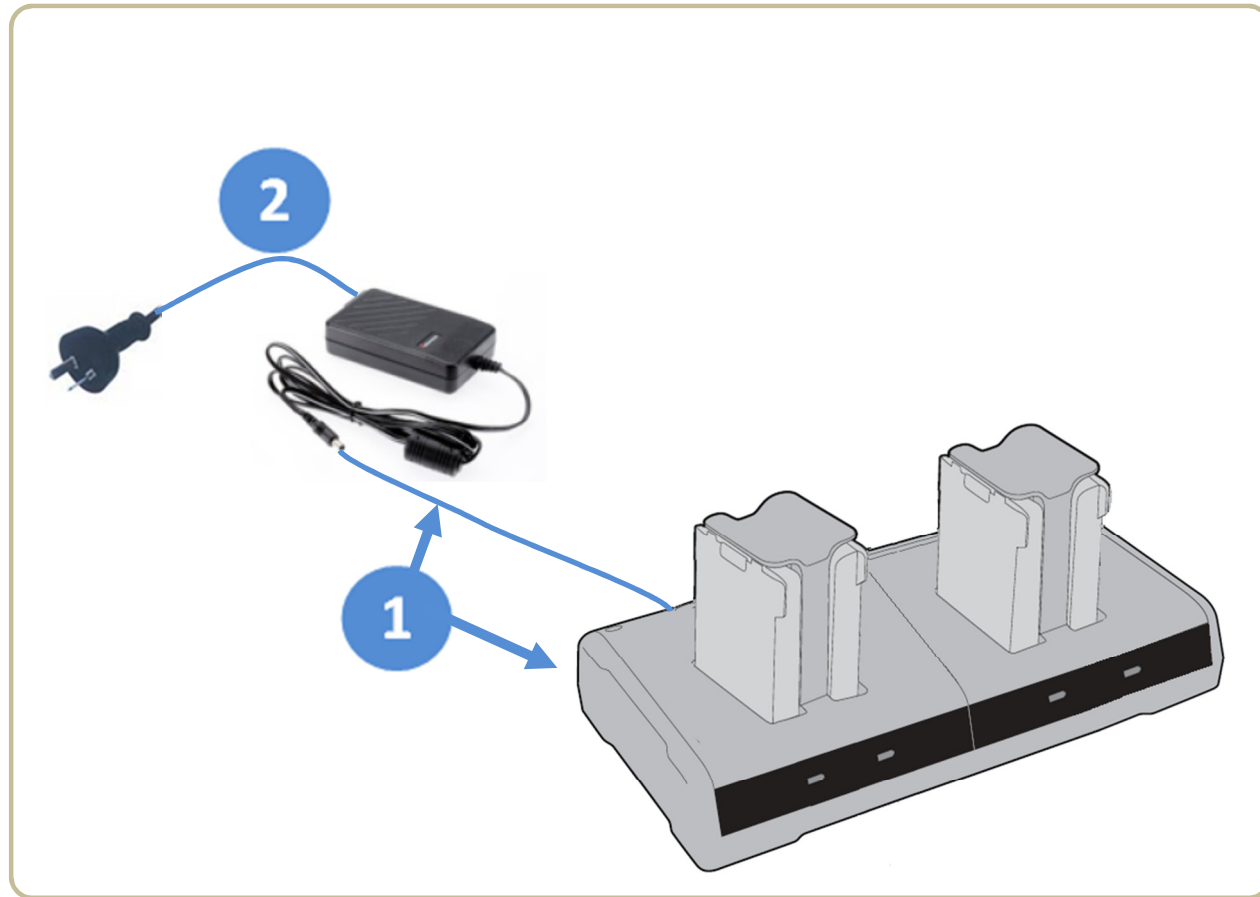


Rear View – Ethernet Dock

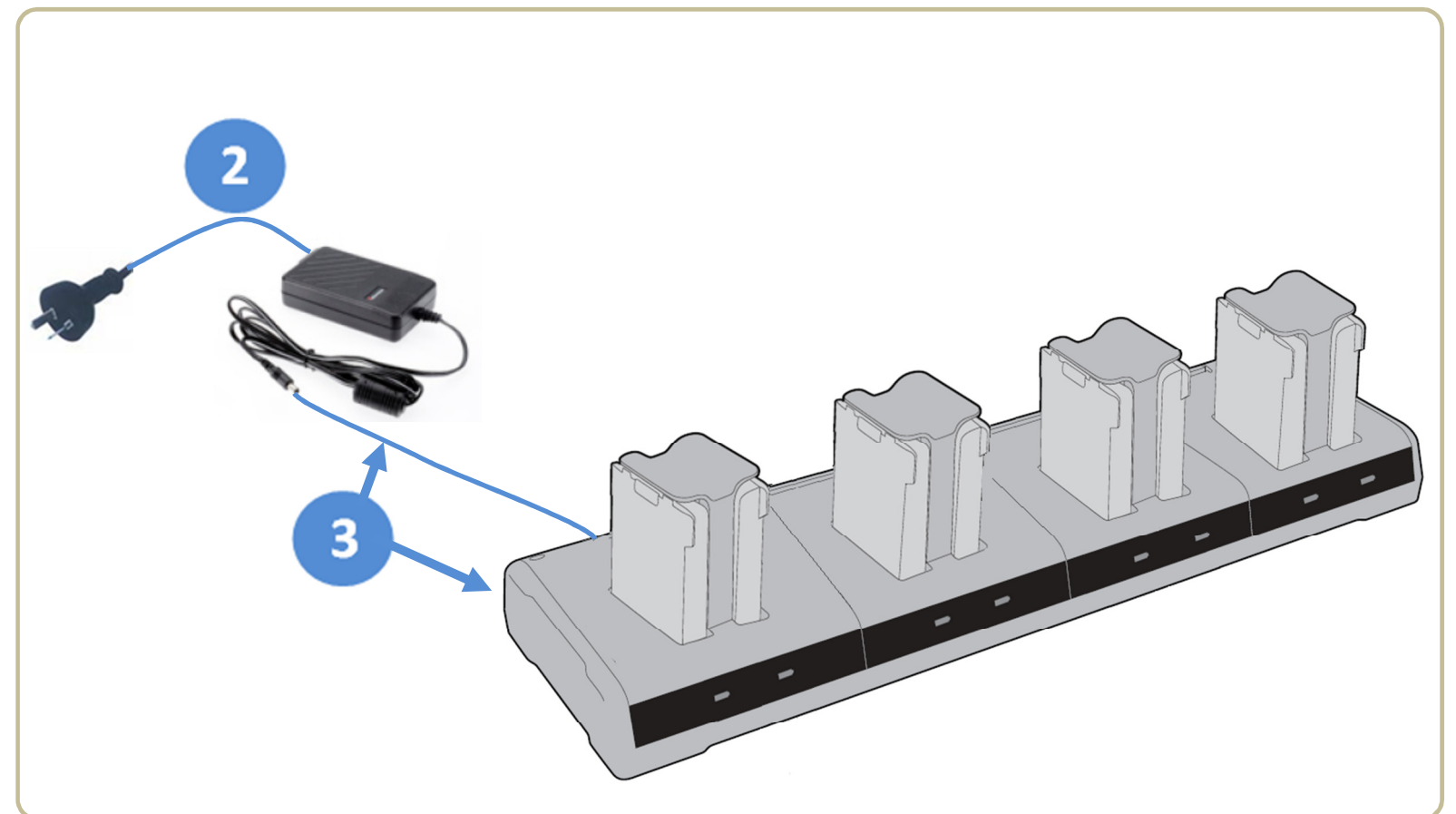
	Part Number	Description
1	DX4A1222200	Quad Dock, Ethernet , CK70/71, no Power Cord (Power Supply Included)
OR	DX4A2222200	Quad Dock, Charge Only , CK70/71, no Power Cord (Power Supply Included)
2	1-974030-025	AC Power Cord, Australia RoHS

70 Series Battery Charging Only

4 – Position Charging



8 – Position Charging



CK70/ CK71 – 4-Position Battery Charger

	Part Number	Description
1	DX2A2BB00	4-position Battery Charger, CK70/71, no Power Cord (Power Supply Included)
2	1-974030-025	AC Power Cord, Australia RoHS

CK70/ CK71 – 8-Position Battery Charger

	Part Number	Description
3	DX4A2BBBB00	8-position Battery Charger, CK70/71, no Power Cord (Power Supply Included)
2	1-974030-025	AC Power Cord, Australia RoHS

Miscellaneous

Intermec Recommended – ATP Industrial Grade Micro SD Cards



	Part Number	Description
1	856-065-004	MICRO-SD CARD, 1GB , AF1GUDI, ROHS
OR	856-065-005	MICRO-SD CARD, 2GB , AF2GUDI, ROHS
OR	856-065-006	MICRO-SD CARD, 4GB , AF4GUDI, ROHS

Why ATP Industrial Grade SD?

ATP's SIP (System-In-Packaging) manufacturing process encapsulates all exposed components and points of failure to ensure the products are fully waterproof, shockproof, and ESD (Electro-Static Discharge) proof. ATP Industrial Grade SD/SDHC Cards can withstand at least an operating/storage temperature range of at least -40 to 85 degrees Celsius. In addition to this temperature range, the cards are completely waterproof, dustproof, and ESD (Electro-Static Discharge) proof. All ATP Industrial Grade SD/SDHC cards are produced under a stringent RoHs and Green Package compliant manufacturing process to guarantee a consistent high level of build quality and performance. ATP Industrial SD cards deliver outstanding performance with read speed (seq) up to **18MB/sec** and write speed (seq) up to **16MB/sec**. All ATP Industrial Grade CF, SD, USB drives, and SSDs are constructed using best-in-class SLC(Single-Level Cell) components with enhanced Error Correction Code(ECC) functions and wear levelling algorithms. This results in MTBF ratings over 2 million hours and the highest write cycle lifetimes in the industry.